



GAT MONTHLY MEMBERSHIP PROGRESS REPORT

Results as of: 7/31/2023

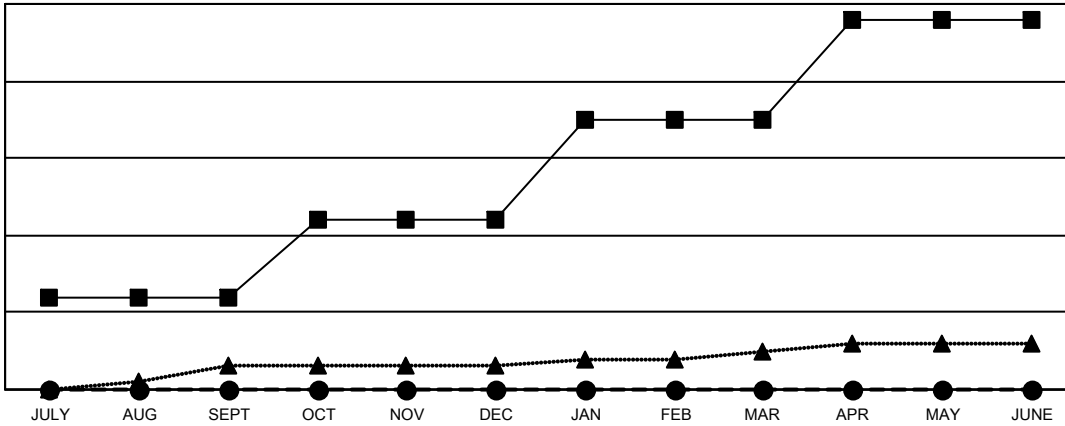
Multiple District 4

LOCATION: CALIFORNIA

Clubs			
RESULTS FOR 2023-2024			
QUARTER	NEW CLUB GOAL	NEW CLUBS	DROPPED CLUBS
JULY/AUG/SEPT	12	0	3
OCT/NOV/DEC	10	0	0
JAN/FEB/MAR	13	0	0
APR/MAY/JUNE	13	0	0

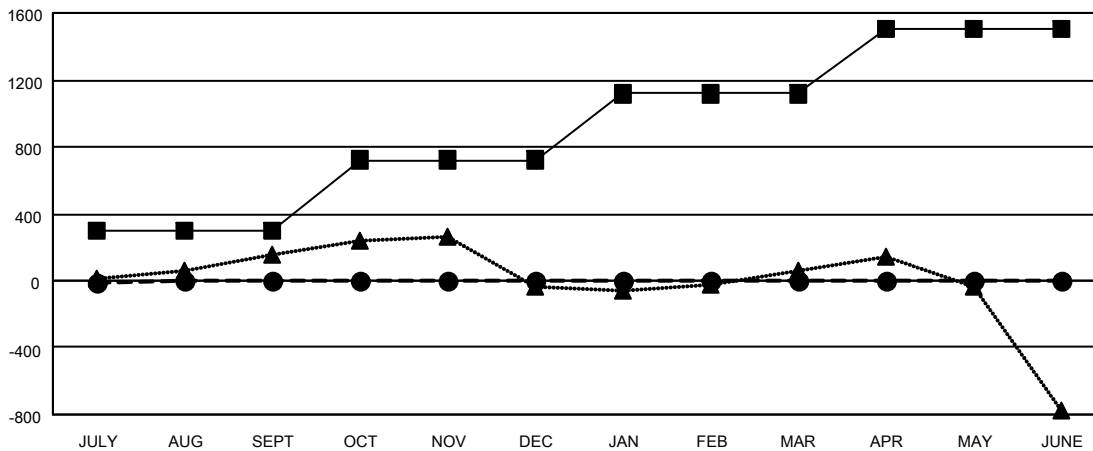
Members			
RESULTS FOR 2023-2024			
QUARTER	MEMBER GROWTH NET GOAL	MEMBER GROWTH ACTUAL	DROPPED MEMBERS ACTUAL (including transfers)
JULY/AUG/SEPT	300	361	321
OCT/NOV/DEC	422	0	0
JAN/FEB/MAR	395	0	0
APR/MAY/JUNE	391	0	0

GOALS AND ACTUAL NEW CLUBS CUMULATIVE



- CURRENT YEAR GOALS FOR NEW CLUBS
- CURRENT YEAR ACTUAL NEW CLUBS
- ▲- LAST YEAR ACTUAL NEW CLUBS

GOALS AND ACTUAL MEMBERS CUMULATIVE



- MEMBER GROWTH NET GOAL
- MEMBER GROWTH ACTUAL
- ▲- LAST YEAR MEMBERSHIP ACTUAL

DROPPED CLUBS: 3	
DROPPED MEMBERS	
DECEASED	27
CLUB CANCELLED	0
OTHER	294
TOTAL	321

115 CLUBS OF 662 ADDED 1 OR MORE NEW MEMBERS

[CLICK HERE FOR CUMULATIVE MEMBERSHIP DATA](#)

GENDER DISTRIBUTION	
MALE	10,286 (57.98%)
FEMALE	7,443 (41.95%)
NON BINARY	0 (0.00%)
PREFER NOT TO ANSWER	12 (0.07%)
TOTAL FAMILY UNIT MEMBERS	3,397
FAMILY MEMBERS PAYING HALF DUES	1,812